

Exova Warringtonfire
Holmesfield Road
Warrington
WA1 2DS
United Kingdom

T : +44 (0) 1925 655 116
F : +44 (0) 1925 655 419
E : warrington@exova.com
W: www.exova.com



Testing. Advising. Assuring.

Title:

Classification of Fire
Resistance Performance In
Accordance With EN 13501-
2:2007+A1:2009

Notified Body No:

0833

Product Name:

**ARBOR brand wood
window**

Report No:

339985

Issue No:

1

Prepared for:

Selectron Ltd. Sti.
Halkali Merkez Mah.
Sengul Sok. No:6
34303 K.Cekmece
Istanbul
Turkey

Date:

22nd April 2014

This classification report consists of six pages and may only be used or reproduced in its entirety.

1. Introduction

This classification report defines the classification assigned to the element "**ARBOR brand wood window**", in accordance with the procedures given in BS EN 13501-2:2007+A1:2009.

2. Details of classified product

2.1 General

For classification purpose, the element '**ARBOR brand wood window**' is defined as a fire resisting openable window.

2.2 Product description

The element, '**ARBOR brand wood window**', is fully described in the test report referenced below and provided in support of classification detailed in Clause 3.1.

3. Test reports in support of classification

3.1 Summary of test reports

Name of Laboratory	Name of sponsor	Test report No.	Test method
Exova warringtonfire Notified Body No. 0833	Selectron Ltd. Sti.	WF Test Report No. 322122 (25 th April 2013)	EN 1634-1: 2008

Summary of WF Test Report No. 322122

Brief Description of Tested Specimen:

The window assembly had overall dimensions of 1344 mm high by 1100 mm wide and incorporated a single glazed blade of overall dimensions 1251 mm high by 1022 mm wide (viewed from the exposed side). The blade comprised hardwood framing and beading and was glazed with a single pane of 6 mm thick C3S Pyroacet XPT glass. The blade was hung within a hardwood frame such that it opened towards the heating conditions of the test. The window assembly was mounted within a low density rigid supporting construction.

Summary of Window Specifications:

1. Outer Frame

Material: Hardwood, species Oak

Density : Minimum 850 kg/m³ (stated)

Corner jointing method: Mortise joint and bonded with adhesive.

Details of Adhesive:

- i. manufacturer: Soudal
- ii. product reference: PU CONSTRUCK
- iii. material type: Polyurethane

Fixing method to masonry surround: Angle brackets positioned at both faces of outer frame were screw fixed to masonry.

2. Glazing Frame

Material: Hardwood, species Oak

Density : Minimum 850 kg/m³ (stated)

Corner jointing method: Mortise joint and bonded with adhesive.

Details of Adhesive:

- i. manufacturer: Soudal
- ii. product reference: PU CONSTRUCK
- iii. material type: Polyurethane

3. Glass

Manufacturer: C3S Securiglass Ltd.

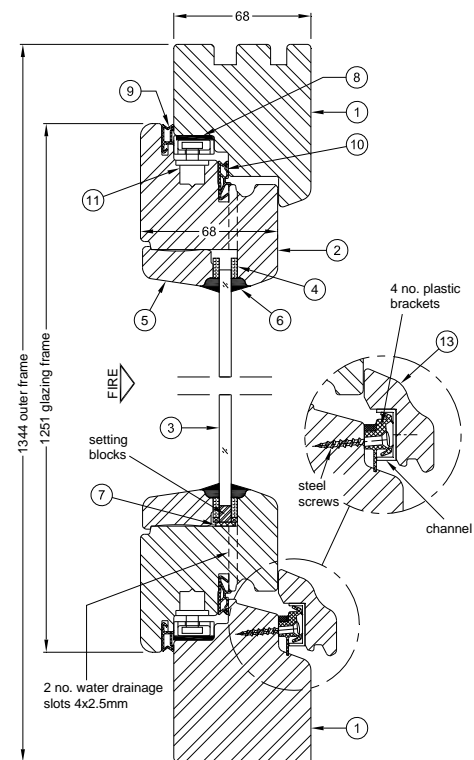
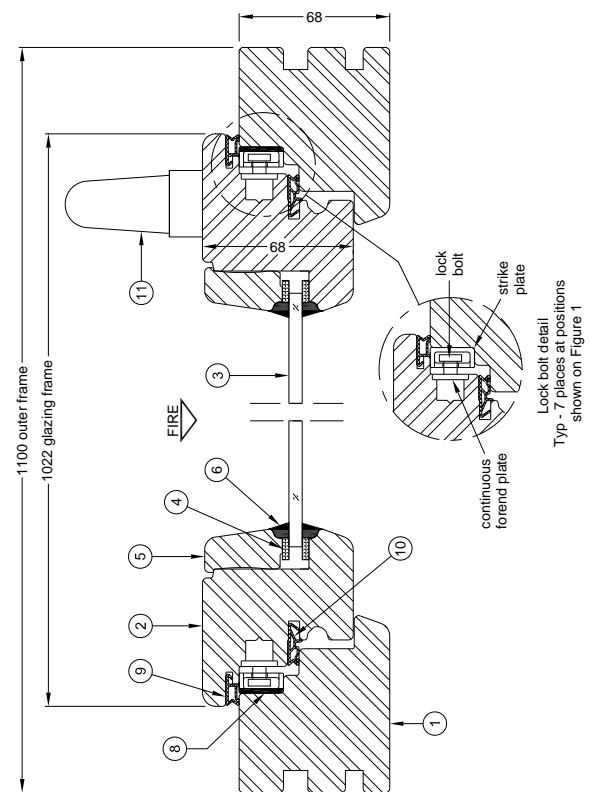
Reference: Pyroacet XPT

Thickness: 6 mm

Overall Glass Size: 878 mm wide x 1107 mm high (Hardwood setting blocks at base of glass only)

4. Glass Edge Seal

Material: Ceramic fibre tape



Summary of WF Test Report No. 322122

5. Glazing Bead

Material: Hardwood, species Oak
Fixing method: Nails

6. Glass Edge Capping Sealant

Manufacturer: Soudal
Reference: Firecyl FR
Material: Silicone

7. Intumescent Strip

Reference: Interdens
Material: Phosphate based intumescent

8. Outer Frame Intumescent Seal

Manufacturer: Kuhn
Reference: Butyl Tape
Material: Polymer based intumescent

9. Smoke Seal

Manufacturer: Schlegel
Reference: Q-lon 3053
Material: Polyurethane (PU) foam core

10. Smoke Seal

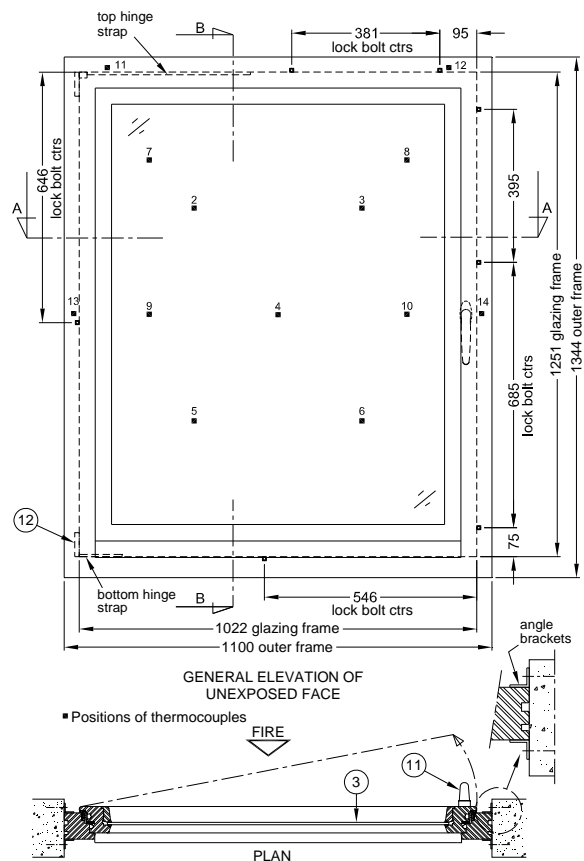
Manufacturer: Schlegel
Reference: Q-lon 3054
Material: Polyurethane (PU) foam core

11. Multi lock/Lever Handleset

Manufacturer: Maco
Reference: Rhapsody

12. Top and Bottom Hinges

Manufacturer: Maco
Reference: Multi Trend
Material: Steel



Test results:		
Integrity	Sustained flaming:	33 minutes
	Gap gauge:	33 minutes
	Cotton Pad:	22 minutes
Insulation		2 minutes
Radiation	Time to exceed 15kW/m ² :	33 minutes (not exceeded)

4. Classification and field of application

4.1 Reference of classification

This classification has been carried out in accordance with clause 7 of EN 13501-2:2007+A1:2009.

4.2 Classification

The product "**ARBOR brand wood window**", may be classified according to the following combinations of performance parameters and classes as appropriate.

R	E	I	W		<i>t</i>	-	M	C	S	IncSlow	sn	ef	r
---	---	---	---	--	----------	---	---	---	---	---------	----	----	---

Considering the tests submitted for classification, the product "**ARBOR brand wood window**", provides the following classification:

Fire resistance classification: E30/EW30

4.3 Direct Field of Application (EN 1634-1: 2008)

There is no Direct Field of Application applicable to openable windows in EN 1634-1: 2008, as detailed in clause 13.1.

5. Limitations

This classification document does not represent type approval or certification of the product.

SIGNED



S Gilfedder
Report & CI Coordinator

APPROVED



A. Kearns
Technical Manager

This copy has been produced from a .pdf format electronic file that has been provided by Exova Warringtonfire to the sponsor of the report and must only be reproduced in full. Extracts or abridgements of reports must not be published without permission of Exova Warringtonfire. The pdf copy supplied is the sole authentic version of this document. All pdf versions of this report bear authentic signatures of the responsible Exova Warringtonfire staff.